

IDENTIFYING RADICAL MODEL YEARS BY CHASSIS NUMBER

**SR1, SR3, SR3SL, SR4, SR5, SR8, PR6
RXC Spyder, RXC Coupe
and Rapture**



By Charley Hoyt
September 2020

For quite a while I have been trying to find a way to identify the exact chassis number that starts / ends each model year. Unfortunately, that is more difficult than it sounds for a couple of reasons. The first reason is that unlike street-based cars where changes are often made to the cars to differentiate each model year, Radical's major changes don't necessarily coincide with model year changes. Additionally, Radical typically considers a car's model year to be when the car was delivered to the customer. This makes identifying the exact chassis number for the switch of model year a bit difficult. For example, say chassis number 689 and 690 were both built on December 1st 2011 and chassis number 690 was delivered the next day in the UK while 689 was sent to Australia on a ship and was delivered to the customer in January, that would make 690 a 2011 and 689 a 2012.

Understanding that identifying the exact chassis number that starts each model year would be challenging and not 100% accurate, I worked with my friends at Radical to take a shot at identifying the cut off points. There will always be a bit of fuzziness on the cars that were built at the end of each year but this is pretty close. The criteria we used was to identify when the cars were delivered to the customer, so in some cases a car made in November or December could be counted as the next model year. We did our best to make the cut off points as accurate as possible.

As an interesting side note, Radical skips number 13 in their build sequence for all models. So you will never find a car identified as chassis number 13.

Here is what we came up with:

Cars Currently in Production

SR3

2002 was the first model year for the SR3, Chassis number 1 was built ~February 2002

2003 - The first chassis number for the 2003 model year is SR300043

2004 - The first chassis number for the 2004 model year is SR300131. Chassis 124-127 could be considered 2004 since they were built in 2003 but delivered in 2004

2005 - The first chassis number for the 2005 model year is SR300201.

2006 - The first chassis number for the 2006 model year is SR300254.

2007 - The first chassis number for the 2007 model year is SR300309. Note that many cars built in 2007 had a "Special Edition" Chassis number plate to commemorate Radical's 20th year. These plates were put on chassis' SR300316 through SR300367

2008 - The first chassis number for the 2008 model year is SR300354.

2009 - The first chassis number for the 2009 model year is SR300400. Note that SR300400 was the first SR3 RS (Gen 2) built. However, chassis number 403 was built with SS (Gen 1) bodywork.

2010 - The first chassis number for the 2010 model year is SR300483.

2011 - The first chassis number for the 2011 model year is SR300585. But 583 is also considered a 2011 because it was sent to the U.S. by ship and was delivered in March 2011.

2012 - The first chassis number for the 2012 model year is SR300694. However, Chassis 682 through 689 are also classified as 2012s because they were built in November and shipped to Australia for 2012 delivery

2013 - The first chassis number for the 2013 model year is SR300782.

2014 - The first chassis number for the 2014 model year is SR300875. Note Chassis number 930 and 931 were the first two SR3 RS test cars built in October 2014. And 933 was the last SR3 RS (gen 2 car built)

2015 - The first chassis number for the 2015 model year is SR300934.

2016 - The first chassis number for the 2016 model year is SR301003.

2017 - The first chassis number for the 2017 model year is SR301069.

2018 - The first chassis number for the 2018 model year is SR301140.

2019 - The first chassis number for the 2019 model year is SR301200.

2020 - The first chassis number for the 2020 model year is SR301245. The first SR3 XX built was for Matt Graham in Canada is chassis number 1277 and is a RH drive car. Chassis 1278 is the first U.S. car delivered to Radical Northwest and has a plaque saying "USA#1"

SR8

2005 – Chassis number 1 was built in December 2004 as a 2005 model

2006 – The first chassis number for the 2006 model year is SR800023

2007 – The first chassis number for the 2007 model year is SR800031

2008 – The first chassis number for the 2008 model year is SR800047

2009 – The first chassis number for the 2009 model year is SR800071

2010 – The first chassis number for the 2010 model year is SR800098

2011 – The first chassis number for the 2011 model year is SR800116 (First high hoop SR8)

2012 – The first chassis number for the 2012 model year is SR800148

2013 – The first chassis number for the 2013 model year is SR800189 (built in Nov. 2012)

2014 – The first chassis number for the 2014 model year is SR800225

2015 – The first chassis number for the 2015 model year is SR800238

2016 – The first chassis number for the 2016 model year is SR800241 (only one car built in 2016)

2017 – The first chassis number for the 2017 model year is SR800242

2018 – The first chassis number for the 2018 model year is SR800248

2019 – The first chassis number for the 2019 model year is SR800268

2020 – The first chassis number for the 2020 model year is?

SR1

2012 – The first chassis number for the 2012 model year is SR100001 (Built June 2012)

2013 – The first chassis number for the 2013 model year is SR100006

2014 – The first chassis number for the 2014 model year is SR100030

2015 – The first chassis number for the 2015 model year is SR100034

2016 – The first chassis number for the 2016 model year is SR100049

2017 – The first chassis number for the 2017 model year is SR100058

2018 – The first chassis number for the 2018 model year is SR100063

2019 – The first chassis number for the 2019 model year is SR1000111

2020 – The first chassis number for the 2020 model year is SR100150

RXC Spyder

2015 – The first chassis number for the 2015 model year is SPYDER0001 (Built December 2014)

2016 – The first chassis number for the 2016 model year is SPYDER0025

2017 – The first chassis number for the 2017 model year is SPYDER0037

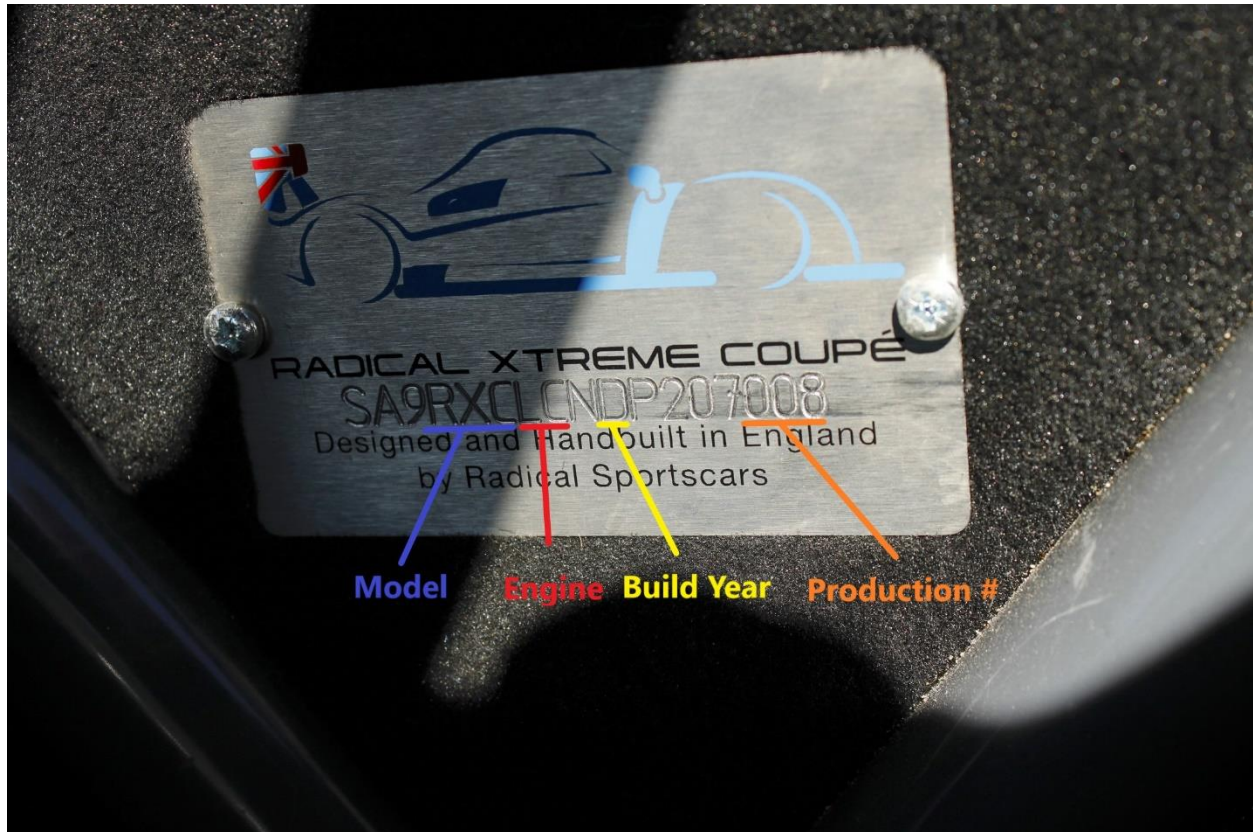
2018 – The first chassis number for the 2018 model year is SPYDER0048

2019 – The first chassis number for the 2019 model year is SPYDER0050

RXC Coupe and Rapture and SR3SL

The RXC Coupe, Rapture, and SR3SL use a chassis number that have 17 alphanumeric digits that and follow the VIN numbering methodology for any road legal car. There is some very good information buried in this number, if you know how to read it. Of particular interest is: Model, Engine type, Build year, and Production Sequence number.

The build year can be identified by the letter in the 10th position has the following code indicating the Build year: A = 2010, B =2011, C=2012, D=2013, E=2014, F=2015, G=2016, H=2017, J=2018, K=2019, L = 2020. (Note: I is not use in VIN numbers)



Out of Production Cars

SR4 – 99 chassis numbers were allocated by number 13 and 86 were not built)

2004 – The first chassis number for the 2004 model year is SR400001 which was built in January 2004.

2005 – The first chassis number for the 2005 model year is SR400029

2006 – The first chassis number for the 2006 model year is SR400046

2007 – The first chassis number for the 2007 model year is SR400055

2008 – The first chassis number for the 2008 model year is SR400063

2009 – The first chassis number for the 2009 model year is SR400066 (only 1 car built)

2010 – The first chassis number for the 2010 model year is SR400067

2011 – The first chassis number for the 2011 model year is SR400083

2012 – The first chassis number for the 2012 model year is SR400087

2013 – The first chassis number for the 2013 model year - No cars were built

2014 – The first chassis number for the 2014 model year is SR400091

2015 – The first chassis number for the 2015 model year is SR400094

2016 – The first chassis number for the 2016 model year is SR400097

SR5 – Total of 19 cars were built, chassis number 13 was not used

2007 – The first chassis number for the 2007 model year is SR500001

2008 – The first chassis number for the 2008 model year is SR500008

2009 – The first chassis number for the 2009 model year is SR500018 (Chassis 18, & 20 had 2009 bodywork and possibly 16 and 17. Chassis 19 was built in Feb 2009 as a chassis only. Chassis number 20 was built in June 2011.)

PR6 – Total of 60 cars built

2006 – The first chassis number for the 2006 model year is PR600001 was built in May 2006

2007 – The first chassis number for the 2007 model year is PR600004

2008 – The first chassis number for the 2008 model year is PR600022

2009 – The first chassis number for the 2009 model year is PR600028

2010 – The first chassis number for the 2010 model year is PR600041

2011 – The first chassis number for the 2011 model year is PR600048

2012 – The first chassis number for the 2012 model year is PR600050

2013 – The first chassis number for the 2013 model year is PR600057

2014 – The first chassis number for the 2014 model year is PR600060 (only one built)

2015 – The first chassis number for the 2015 model year is PR600061 (only 1 built)

I hope you find this helpful.

Charley

Radical Sportscar Registry

