

IDENTIFYING RADICAL MODEL YEARS BY CHASSIS NUMBER

**SR1, SR3, SR3SL, SR4, SR5, SR8, SR10, PR6
RXC Spyder, RXC Coupe, Rapture,
Clubsport / Prosport**



By Charley Hoyt
Revision F
August 2024

For quite a while I have been trying to find a way to identify the exact chassis number that starts / ends each model year. Unfortunately, that is more difficult than it sounds for a couple of reasons. The first reason is that unlike street-based cars where changes are often made to the cars to differentiate each model year, Radical's major changes don't necessarily coincide with model year changes. Additionally, Radical typically considers a car's model year to be when the car was delivered to the customer not the actual production date. This makes identifying the exact chassis number for the switch of model year a bit difficult. For example, say chassis number 689 and 690 were both built on December 1st 2011 and chassis number 690 was delivered the next day in the UK while 689 was sent to Australia on a ship and was delivered to the customer in January, that would make 690 a 2011 and 689 a 2012.

Understanding that identifying the exact chassis number that starts each model year would be challenging and not 100% accurate, I worked with my friends at Radical to take a shot at identifying the cut off points. There will always be a bit of fuzziness on the cars that were built at the end of each year, but this is pretty close. The criteria we used was to identify when the cars were delivered to the customer market, so in some cases a car made in November or December could be counted as the next model year. We did our best to make the cut-off points as accurate as possible.

As an interesting side note, Radical skips number 13 in their build sequence for all models (Except the SR10). So, you will never find a car identified as chassis number 13(Except the SR10).

Here is what we came up with:

Current Production Cars

SR1	Page 3
SR3	Page 3
SR10	Page 4
RXC Spyder	Page 5
RXC Coupe	Page 6

Out of Production Cars

Rapture	Page 7
SR3SL	Page 8
SR4	Page 8
SR5	Page 8
SR8	Page 9
PR6	Page 9
Clubsport / Prosport	Page 10

Cars Currently in Production

SR1

2012 – The first chassis number for the 2012 model year is SR100001 (Built June 2012)

2013 – The first chassis number for the 2013 model year is SR100006

2014 – The first chassis number for the 2014 model year is SR100030

2015 – The first chassis number for the 2015 model year is SR100034

2016 – The first chassis number for the 2016 model year is SR100049

2017 – The first chassis number for the 2017 model year is SR100058

2018 – The first chassis number for the 2018 model year is SR100063

2019 – The first chassis number for the 2019 model year is SR1000111

2020 – The first chassis number for the 2020 model year is SR100150

2021 – The first chassis number for the 2021 model year is SR100165

2022 – The first chassis number for the 2022 model year is SR100183

2023 – The first chassis number for the 2023 model year is SR100188

2023 – The first SR1 XXR is chassis number SR100205

2024 – The first chassis number for the 2024 model year is SR100210

SR3

2002 was the first model year for the SR3, Chassis number 1 was built ~February 2002

2003 - The first chassis number for the 2003 model year is SR300043

2004 - The first chassis number for the 2004 model year is SR300131. Chassis 124-127 could be considered 2004 since they were built in 2003 but delivered in 2004

2005 - The first chassis number for the 2005 model year is SR300201.

2006 - The first chassis number for the 2006 model year is SR300254.

2007 - The first chassis number for the 2007 model year is SR300309. Note that many cars built in 2007 had a "Special Edition" Chassis number plate to commemorate Radicals 20th year. These plates were put on chassis' SR300316 through SR300367

2008 - The first chassis number for the 2008 model year is SR300354.

2009 - The first chassis number for the 2009 model year is SR300400. Note that SR300400 was the first SR3 RS (Gen 2) built. However, chassis number 403 was built with SS (Gen 1) bodywork.

SR3 (Continued)

2010 - The first chassis number for the 2010 model year is SR300483.

2011 - The first chassis number for the 2011 model year is SR300585. But 583 is also considered a 2011 because it was sent to the U.S. by ship and was delivered in March 2011.

2012 - The first chassis number for the 2012 model year is SR300694. However, Chassis 682 through 689 are also classified as 2012s because they were built in November and shipped to Australia for 2012 delivery.

2013 - The first chassis number for the 2013 model year is SR300782.

2014 - The first chassis number for the 2014 model year is SR300875. Note Chassis number 930 and 931 were the first two SR3 RSX test cars built in October 2014. And 933 was the last SR3 RS (gen 2 car built)

2015 - The first chassis number for the 2015 model year is SR300934.

2016 - The first chassis number for the 2016 model year is SR301003.

2017 - The first chassis number for the 2017 model year is SR301069.

2018 - The first chassis number for the 2018 model year is SR301140.

2019 - The first chassis number for the 2019 model year is SR301200.

2020 - The first chassis number for the 2020 model year is SR301245. The first SR3 XX built was for Matt Graham in Canada is chassis number 1277 and is a RH drive car. Chassis 1278 is the first U.S. SR3 XX delivered to Radical Northwest and has a plaque saying "USA#1"

2021 – The first chassis number for the 2021 model year is SR301307 (1313 was the first car in CY 2021)

2022 – The first chassis number for the 2022 model year is SR301394

2022 V2 – The first chassis number for the 2022 SR3XX Version 2 (Raised steering column) is SR301403

2023 – The first chassis number for the 2023 model year is SR301515

2023 – The first SR3XXR is chassis number SR301540. Note: 1541 and 1542 are XXs and 1540 and 1543 onward are XXRs

2024 – The first chassis number for the 2024 model year is SR301617

SR10

2020 – The first chassis number for the 2020 model year is SR10 00001 (SR10 00001 - 4 were built in parallel. SR10 00004 was the first car completed and was used as the North American Demo car)

2021 – The first chassis number for the 2021 model year is SR10 00006 (11 was first January build)

2022 – The first chassis number for the 2022 model year is SR10 00071

2022 V2 – The first chassis number for the 2022 Version 2 (Raised steering column) is SR10 00078

SR10 (Continued)

2022 – First car with Life PDU is SR10 00107

2023 – The first chassis number for the 2023 model year is SR10 00109

2023 – The first SR10 XXR chassis is SR10 00122

2024 – The first chassis number for the 2024 model year is SR10 00137

RXC Spyder

2015 – The first chassis number for the 2015 model year is SPYDER0001 (Built December 2014)

2016 – The first chassis number for the 2016 model year is SPYDER0025

2017 – The first chassis number for the 2017 model year is SPYDER0037

2018 – The first chassis number for the 2018 model year is SPYDER0048

2019 – The first chassis number for the 2019 model year is SPYDER0050

2020 – No cars built

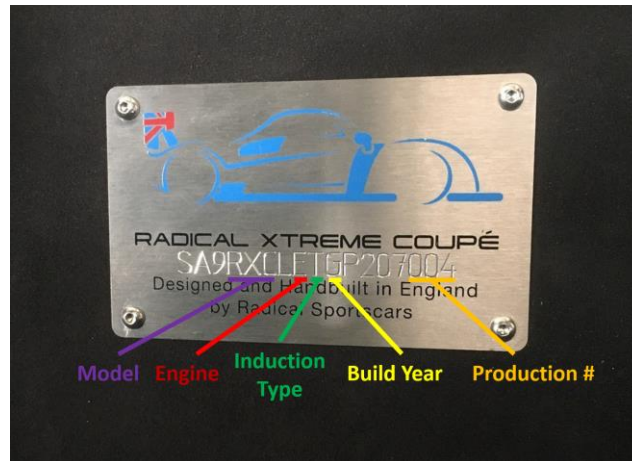
2021 – No cars built

2022 – The first chassis number for the 2022 model year is SPYDER0053 (Built in November 2021)

2023 – No Spydery built for 2023.

2024 – No Spydery built for 2024 yet.

The **RXC Coupe** uses a chassis number that has 17 alphanumeric digits that follow the VIN numbering methodology for any road legal car. There is some very good information buried in this number, if you know how to read it. Of particular interest is: Model, Engine type, Build year, and Production Sequence number (the production sequence number starts at 1 every year).



VIN Position	1	2	3	4	5	6	7	8	9	10	11	12	13	14	15	16	17
RXC VIN Example	S	A	9	R	X	C	L	C	T	E	P	2	0	7	0	0	1
	Build Region (SA = U.K.)	Low Volume Passenger Vehicle	Vehicle Model	Drive Side RHD or LHD	Engine Code	Induction Type	Model Year	Plant Location P = Peterborough	Low Volume Mfg Identity (2007 = Radical)	Consecutive Annual Production Number							

The build year can be identified by the letter in the 10th position has the following code indicating the Build year: A = 2010, B =2011, C=2012, D=2013, E=2014, F=2015, G=2016, H=2017, J=2018, K=2019, L = 2020, M=2021. (Note: I is not use in VIN numbers)

RXC Engine Codes: C = 3.7L V6, Y = RPE 3.0 V8, E = 3.5L V6, X= 2.7L RPE V8

Induction type: T = Turbo, N = Naturally Aspirated.

RXC coupe numbering format exceptions: Some RXC chassis numbers in 2014 used a shortened version of the numbering code. Chassis 22, 23, 24, and 25 have three digits missing, (which represent driver side, Engine code, and Induction type). Example SA9RXCEP207025.

RXC Coupe

2013 – 15 built (Chassis 5, 13,17, and 19 were not built)

2014 – 32 built (Chassis number range was 1 to 38 but, chassis number 8, 9, and 10 were used for FIA static force test and 8 and 9 were destroyed in testing. Chassis 13, 26 and 31 were not produced)

2015 – 20 built (chassis number 13 not used)

2016 – 20 built (chassis number 13 not used, chassis 18 was a re-chassis)

2017 – 12 built (chassis number 13 not used, 14 was sold as a bare chassis)

2018 – 5 built

2019 – 4 built

2020 – 1 built

2021 – 3 built

2022 – 5 built (Note SA9RXCLETNP207005 was built in the first week of January 2023)

2023 – 1 built (Red coupe)

Out of Production Cars

The Rapture and SR3 SL use a 17-digit chassis number that is similar to the RXC with the exception that the engine code uses two digits and does not have an identifier for Induction type.

VIN Position	1	2	3	4	5	6	7	8	9	10	11	12	13	14	15	16	17
SR3 SL VIN Example	S	A	9	3	S	L	R	C	P	E	P	2	0	7	0	0	1
	Build Region (SA = U.K.)	Low Volume Passenger Vehicle	Vehicle Model		Drive Side RHD or LHD	Engine Code		Model Year	Plant Location P = Peterborough	Low Volume Mfg Identity (2007 = Radical)		Consecutive Annual Production Number					

Rapture and SR3SL Engine Codes: 23=2261cc I4 Turbo (Rapture), CP = 2.0L I4 Turbo (SR3SL)

SR3SL numbering format exceptions - Radical used two different SR3 SL chassis numbering formats for the first 14 cars before settling into the standard format. Chassis numbers 1-5, 7-10, and 12 use a format like SR3SL0000000000XX (where XX is the sequence number). Chassis numbers 6, 11, and 14 and above use the format that continued to be used on the RXC Coupes. Example: SA9SLL24CP2070XX (where xx is the sequence number).

Rapture – Total of 7 chassis built.

2019 – 6 Built (first car built in October 2019)

SR3SL – Total of 55 chassis built.

2011 – 13 built (Chassis number 1 – 14 but, 13 was not built)

2012 – 27 built

2013 – 10 built

2014 – 3 built

2015 – 1 built

2016 – 1 built

SR4 – Total of 99 chassis built (Chassis numbers 13 and 86 were not used)

2004 – The first chassis number for the 2004 model year is SR400001 which was built in January 2004.

2005 – The first chassis number for the 2005 model year is SR400029

2006 – The first chassis number for the 2006 model year is SR400046

2007 – The first chassis number for the 2007 model year is SR400055

2008 – The first chassis number for the 2008 model year is SR400063

2009 – The first chassis number for the 2009 model year is SR400066 (only 1 car built)

2010 – The first chassis number for the 2010 model year is SR400067

2011 – The first chassis number for the 2011 model year is SR400083

2012 – The first chassis number for the 2012 model year is SR400087

2013 – The first chassis number for the 2013 model year - No cars were built

2014 – The first chassis number for the 2014 model year is SR400091

2015 – The first chassis number for the 2015 model year is SR400094

2016 – The first chassis number for the 2016 model year is SR400097

SR5 – Total of 19 chassis were built (chassis number 13 was not used)

2007 – The first chassis number for the 2007 model year is SR500001 (7 built)

2008 – The first chassis number for the 2008 model year is SR500008 (7 built – no chassis number 13)

2009 – The first chassis number for the 2009 model year is SR500018 (4 built in 2009 and 1 built in 2011. Chassis 18, & 20 had 2009 bodywork and possibly 16 and 17. Chassis 19 was built in Feb 2009 as a chassis only. Chassis number 20 was built in June 2011.

SR8 – Total of 272 chassis built (chassis number 13 was not used)

2005 – Chassis number 1 was built in December 2004 as a 2005 model

2006 – The first chassis number for the 2006 model year is SR800023

2007 – The first chassis number for the 2007 model year is SR800031

2008 – The first chassis number for the 2008 model year is SR800047

2009 – The first chassis number for the 2009 model year is SR800071

2010 – The first chassis number for the 2010 model year is SR800098

2011 – The first chassis number for the 2011 model year is SR800116 (First high hoop SR8)

2012 – The first chassis number for the 2012 model year is SR800148

2013 – The first chassis number for the 2013 model year is SR800189 (built in Nov. 2012)

2014 – The first chassis number for the 2014 model year is SR800225

2015 – The first chassis number for the 2015 model year is SR800238

2016 – The first chassis number for the 2016 model year is SR800241 (only one car built in 2016)

2017 – The first chassis number for the 2017 model year is SR800242

2018 – The first chassis number for the 2018 model year is SR800248

2019 – The first chassis number for the 2019 model year is SR800268

2020 – The first chassis number for the 2020 model year is SR800270 (271, 272, and 273 built in 2020)

PR6 – Total of 60 chassis built (Chassis number 13 was not used)

2006 – The first chassis number for the 2006 model year is PR600001 was built in May 2006

2007 – The first chassis number for the 2007 model year is PR600004

2008 – The first chassis number for the 2008 model year is PR600022

2009 – The first chassis number for the 2009 model year is PR600028

2010 – The first chassis number for the 2010 model year is PR600041

2011 – The first chassis number for the 2011 model year is PR600048

2012 – The first chassis number for the 2012 model year is PR600050

2013 – The first chassis number for the 2013 model year is PR600057

2014 – The first chassis number for the 2014 model year is PR600060 (only one built)

2015 – The first chassis number for the 2015 model year is PR600061 (only one built)

Clubsport / Prosport – Total of 219 chassis built. Note: Clubsport Production started in 1997 and Prosport production started in 1999. From 1999 through 2006 the Prosport and Clubsport production was intermixed and used the same number sequence. There was one chassis built in 2009 as a replacement chassis. Chassis number 13 was not built.

1997 – The first chassis number built in 1997 was chassis number 1

1998 – The first chassis number built in 1998 was chassis number 5

1999 – The first chassis number built in 1999 was chassis number ~30. The precise number is not known but is between 25 (built Oct 28, 1998, and 34 (built Feb. 27, 1999)

2000 – The first chassis number built in 2000 was chassis number 59 (however 61 and 62 were built in 1999)

2001 – The first chassis number built in 2001 was chassis number 123

2002 – The first chassis number built in 2002 was chassis number 164

2003 – The first chassis number built in 2003 was chassis number 184 (Note that chassis number 185 was the last Clubsport built)

2004 – The first chassis number built in 2004 was chassis number 188

2005 - The first chassis number built in 2005 was chassis number 194

2006 – The first chassis number built in 2006 was chassis number 196 and the last chassis built was chassis number 219 (the last regular production Prosport)

2009 – Chassis number 220 was produced in 2009 as a replacement chassis.

