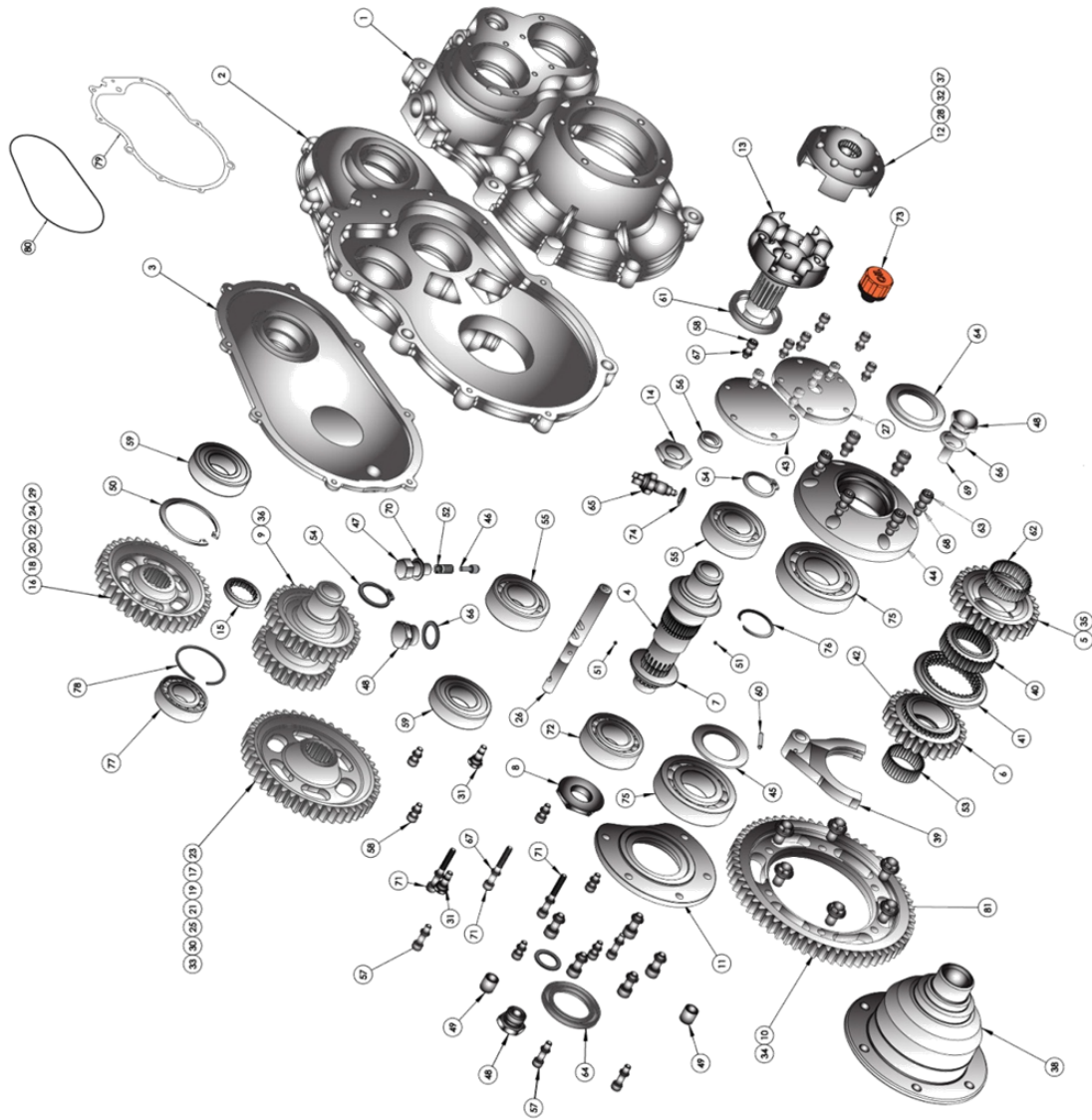




# SR3 GEAR DRIVE UNIT – EXPLODED DIAGRAM



No.	Part Number	Serial No.	Description	Qty.
1	TQ0111	AR103	Rear Case	1
2	TQ0112	AR105	Front Case	1
3	TQ0050	AR107	Gear Ratio Cover Plate	1
4	TQ0050	AR109	Reverse Gear - Main Shaft	1
5	TQ0115	AR109	Reverse Gear - Main Shaft	1
6	TQ0014	AR110	Forward Gear - Main Shaft	1
7	TQ0116	AR111	Thrust Washer - Main Shaft	1
8	TQ0017	AR112	Locknut - Main Shaft (left-hand thread)	1
9	TQ0017	AR113	Locknut - Main Shaft (right-hand thread)	1
10	TQ0017	AR114	Locknut - Main Shaft (left-hand thread)	1
11	TQ0118	AR115	Differential Bearing Retainer	1
12	TQ0035	AR116	Coupling (K7 Engine)	1
13	TQ0036	AR117	Coupling Input Shaft	1
14	TQ0038	AR118	Locknut - Input Shaft (Right-hand Thread)	1
15	TQ0038	AR119	Locknut - Input Shaft (Left-hand Thread)	1
16	TQ0049	AR120	Gear Ratio - Input Shaft, RS 5441	1
17	TQ0049	AR121	Gear Ratio - Input Shaft, RS 5441	1
18	TQ0048	AR122	Gear Ratio - Input Shaft, RS 4091	1
19	TQ0048	AR123	Gear Ratio - Input Shaft, RS 4091	1
20	TQ0047	AR124	Gear Ratio - Input Shaft, RS 2351	1
21	TQ0047	AR125	Gear Ratio - Input Shaft, RS 2351	1
22	TQ0046	AR126	Gear Ratio - Input Shaft, RS 0711	1
23	TQ0046	AR127	Gear Ratio - Input Shaft, RS 0711	1
24	TQ0045	AR128	Gear Ratio - Input Shaft, RS 0711	1
25	TQ0045	AR129	Gear Ratio - Input Shaft, RS 0711	1
26	TQ0120	AR130	Input Shaft (Right-hand Thread)	1
27	TQ0120	AR131	Input Shaft (Left-hand Thread)	1
28	TQ0044	AR136	Coupling Heavy-duty (K7 Engine)	1
29	TQ0044	AR137	Gear Ratio - Input Shaft, RS 2701 / RS 2081	1
30	TQ0044	AR137	Gear Ratio - Input Shaft, RS 2701	1
31	TQ0121	AR139	Input Shaft (Right-hand Thread)	2
32	TQ0121	AR140	Input Shaft (Left-hand Thread)	2
33	AR148		Crownwheel, R2.32.1	1
34	AR149		Crownwheel, R2.32.1	1
35	AR150		Forward Gear (Synchro) - Main Shaft	1
36	TQ0187	AR151	Idle Shaft (Incorporating 2ST & 3RT GEARS)	1
37	TQ0187	AR152	Idle Shaft (Incorporating 2ST & 3RT GEARS)	1
38	TQ0122	AR153	Differential	1
39	TQ0054	AR160	Selector Fork	1
40	TQ0123	AR115	Drive Hub	1
41	TQ0124	AR116	Drive Disc (Synchro Engagements)	1
42	TQ0125	AR117	Rolling Ring (Synchro) Forward Gear - Input Shaft	1
43	TQ0127	AR118	Rolling Ring (Synchro) Reverse Gear - Input Shaft	1
44	TQ0127	AR114	Differential Bearing Retainer Long	1
45	TQ0128	AR124	Spacer - Differential Front End	1
46	TQ0129	ESU128	Index Plunger	1
47	TQ0130	ESU127	Index Plunger Housing	1
48	TQ0132	EGG169	Hollow Dowel (to suit M10)	2
50	TQ0133	0042	Circlip - Internal	1
51	TQ0134	0225	Ball Ø 1/8	2
52	TQ0113	0242	Spring - Compression	1
53	TQ0115	0245	Roller Ø 1/8 x 1/8	2
54	TQ0115	0245	Roller Ø 1/8 x 1/8	2
55	TQ0136	0304	Ball Ø 1/8	2
56	TQ0057	0378	Oil Seal - 1.6x2.6x7	1
57	0389		Socket Head Cap Screw M0x1.0x2.5 LG	4
58	0442		Socket Head Cap Screw M0x1.0x1.6 LG	16
59	0596		Ball Ø 1/8	1
60	TQ0137	0596	Seal Ø 1/8	1
61	TQ0030	0616	Bearing - Roller 40x45x17	1
62	TQ0138	0665	Bearing - Roller 40x45x17	1
63	TQ0033	0684	Socket Head Cap Screw M0x1.25x2.0 LG	11
64	TQ0053	0748	Oil Seal - 40x45x17	2
65	TQ0053	0748	Oil Seal - 40x45x17	2
66	TQ0031	0801	Washer - 20mm bore with oil seal	3
67	TQ0143	0879	Washer - Schmoor type M6	23
68	TQ0144	0880	Washer - Schmoor type M8	11
69	TQ0283	0883	Magnet - Cylindrical Ø 10x20 LG	1
70	TQ0149	0901	Socket Head Cap Screw M0x1.0x0.8 LG	3
71	TQ0139	1009	Bearing - Roller 30x42x20	1
72	TQ0039	1035	Bearing - Ball B5P F4.9 IP4	1
73	TQ0039	1035	Bearing - Ball B5P F4.9 IP4	1
74	TQ0148	1069	Washer - Ø 12mm bore with oil seal	2
75	TQ0140	1184	Bearing - Ball 1308x3.250x2.750	2
76	TQ0141	1209	Washer - 20mm bore with oil seal	1
77	TQ0141	1209	Bearing - Roller Ø5x2x1.5	1
78	TQ0146	1210	Circlip - Internal (plain)	1
79	TQ0019	1362	Gasket - Paper (Front/Rear Casting Seal)	1
80	TQ0058	1363	O-Ring - (Gear Ratio Cover Plate)	1
81	TQ0110		Crownwheel Bolt	6



**SIMMS' MEDAL  
WINNER**

**NORDSCHLEIFE  
LAP RECORD HOLDER**